

Platinum
SERIES

**Frankford
Arsenal** 
Reloading Tools

Powder Measure

Care & Usage Instructions

Instructions #I048578
Product #909292
Revision:A



STOP!

If you have a problem with this product, **DON'T RETURN IT TO THE STORE WHERE YOU PURCHASED IT.** Contact customer service at...

Battenfeld
Technologies, Inc.

2501 LeMone Industrial Blvd. / Columbia, MO 65201
573-445-9200 / Email: sales@battenfeldtechnologies.com
Or visit our website @ www.BTibrands.com

NOT WARRANTED AGAINST MISUSE, ABUSE, OR COMMERCIAL USE.

Limited Warranty

Every Frankford Arsenal product is warranted to be free of defects in materials and workmanship for a period of one (1) year from the date of original purchase. Frankford Arsenal will, at its option, repair or replace without charge, except for transportation costs, parts that fail under normal use and service when operated and maintained in accordance with our Instructions. This warranty does not apply to normal wear or to items whose life is dependent upon their use and care. This warranty is in lieu of all other warranties, expressed or implied and releases Frankford Arsenal, its affiliates, and its vendors from all other obligations and liabilities.



INFORMATION AND SAFETY INSTRUCTIONS



Ammunition reloading can be dangerous if done improperly and should not be attempted by persons not willing and able to read and follow instructions exactly. Children should not be permitted to reload ammunition without strict parental supervision. Always wear safety glasses when reloading and shooting. Ammunition loaded with these tools and data should only be used in modern guns in good condition. We do not accept responsibility for ammunition loaded with these tools or data as we have no control over the manufacture and storage of components or loading procedure and techniques. Primers and gun powders, like gasoline and matches, can be dangerous if improperly handled or misused.

GENERAL

- To remove the metering device, always be sure to drop any charge first.
- Always be sure that your Micrometer Metering device is locked in place before operating.
- Always verify your charges with a scale before loading.
- Any moisture in the unit will cause powder to stick, and charge weights will vary drastically.
- Use the equipment as manufacture recommends. Study the instructions carefully and become thoroughly familiar with the operation of the product. Don't take short cuts.
- Keep tools and components neat, clean and orderly, Promptly clean up any powder spills.
- Always wear adequate eye protection.
- If any unusual resistance is encountered when moving the operating handle, **STOP IMMEDIATELY** and investigate the cause. To proceed against unusual resistance may damage equipment and/or cause serious injury!

POWDER HANDLING

- Store primers and powder beyond the reach of children and away from heat, dampness, open flames and electrical equipment.
- **DO NOT** use any powder unless its identity is positively known. Discard all mixed powders and those of uncertain or unknown identity.
- Before charging cases, settle the powder in the powder hopper. Throw and check the weight of at least ten charges. This will assure you that the correct powder charge is being thrown.
- Use of a powder baffle will help to throw consistent charges.
- After a reloading session ends, pour the remaining powder back in its original factory container. This will preserve the identity and shelf life of the powder.
- **DO NOT** smoke while handling powder or primers.
- **DO NOT USE BLACK POWDER** with the Frankford Arsenal® Powder Measure.

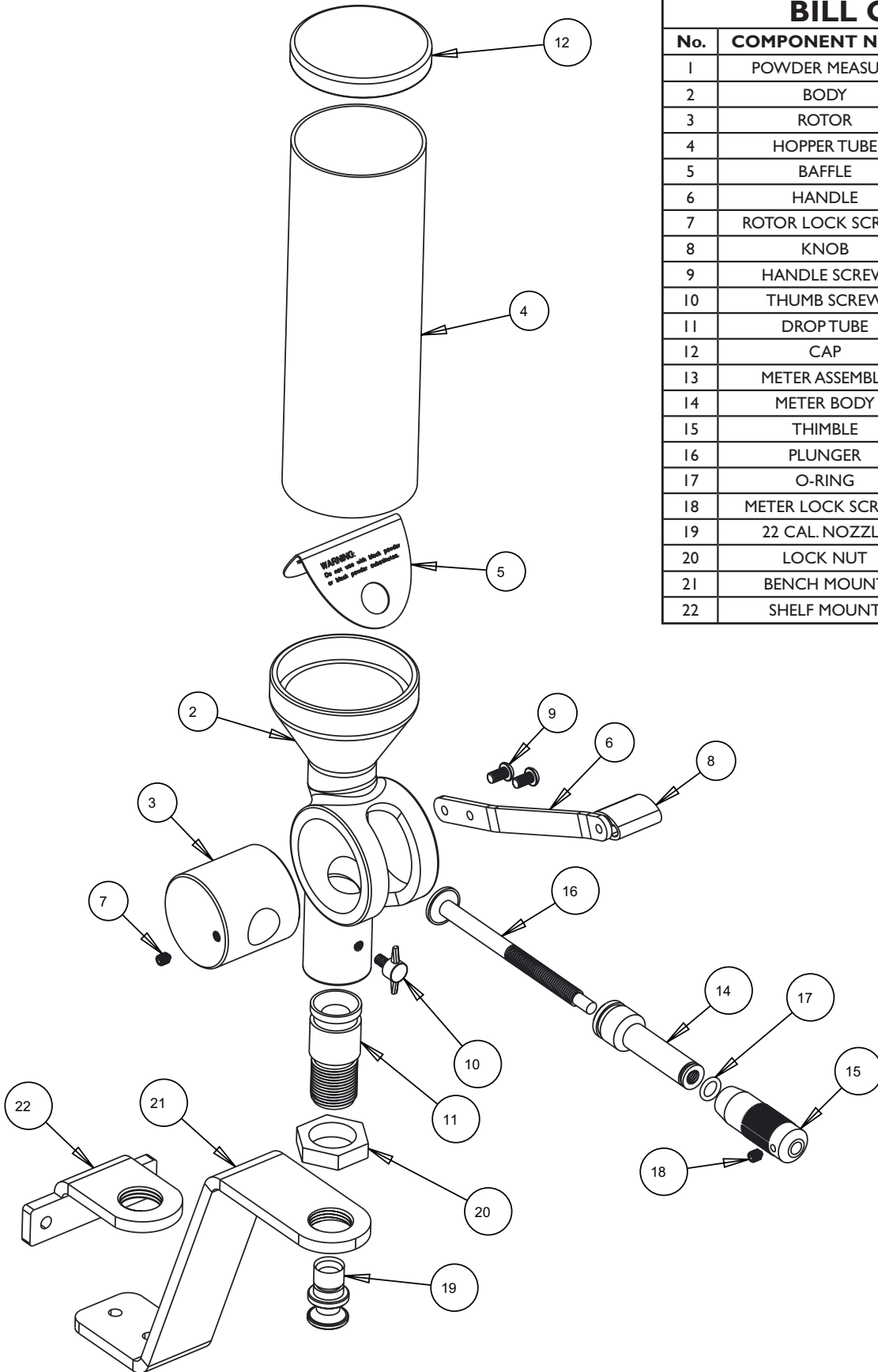


IMPORTANT! YOU MUST DO BEFORE USE



Thank you for purchasing the Frankford Arsenal® Powder Measure. The Powder Measure has been shipped with a corrosion resistant oily film that must be removed before use. Failure to remove this film may cause powder to stick to the inside surfaces, which will result in varying powder charges. The film can be removed using aerosol cleaner/degreaser or hot soapy water. If the components are cleaned with water, be sure to thoroughly dry the entire component using compressed air or warm air from a hair dryer.

CONTENT



BILL OF MATERIAL

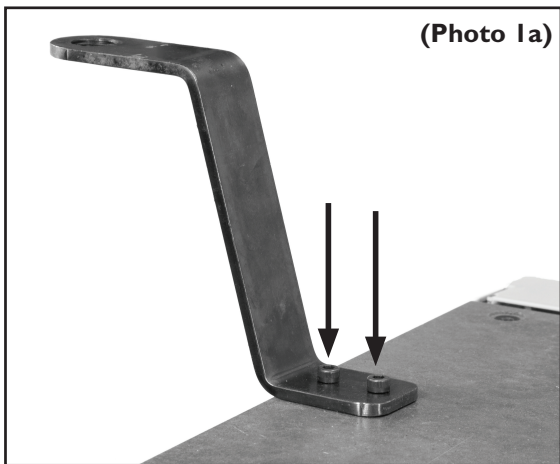
No.	COMPONENT NAME	Part No.	Type	Qty.
1	POWDER MEASURE	1050179	ASSEMBLY	1
2	BODY	1028428	PART	1
3	ROTOR	123747	PART	1
4	HOPPER TUBE	1028457	PART	1
5	BAFFLE	1023745	PART	1
6	HANDLE	1023749	PART	1
7	ROTOR LOCK SCREW	1023748	PART	1
8	KNOB	1023750	PART	1
9	HANDLE SCREW	1023752	PART	2
10	THUMB SCREW	1023754	PART	1
11	DROPTUBE	1028698	PART	1
12	CAP	1032958	PART	1
13	METER ASSEMBLY	1034129	ASSEMBLY	1
14	METER BODY	1033663	PART	1
15	THIMBLE	1033633	PART	1
16	PLUNGER	1033678	PART	1
17	O-RING	1034130	PART	1
18	METER LOCK SCREW	1023748	PART	1
19	22 CAL. NOZZLE	1044577	PART	1
20	LOCK NUT	1028777	PART	1
21	BENCH MOUNT	1028548	PART	1
22	SHELF MOUNT	1023904	PART	1



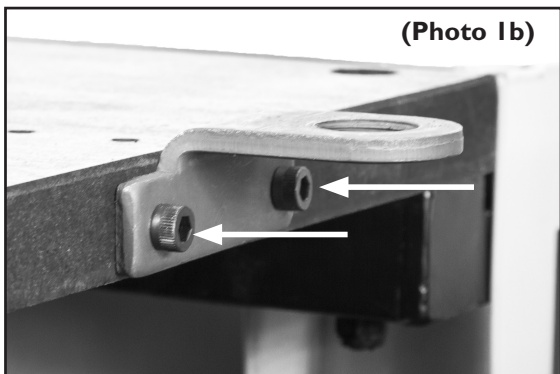
Select mounting configuration bracket;
Shelf Mount or Bench Mount.



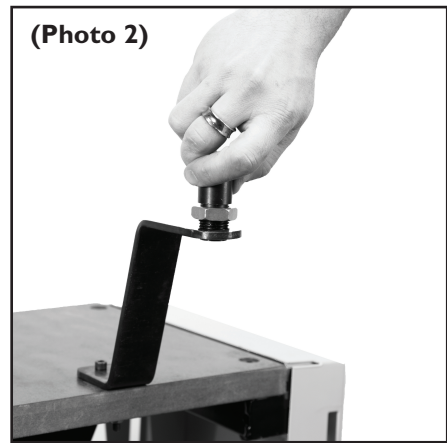
1. Attach bracket to bench using your own hardware. **(Photo 1a & 1b)** Thread Drop Tube into 7/8" threaded hole in bracket. Secure with lock nut. **(Photo 2)**



(Photo 1a)

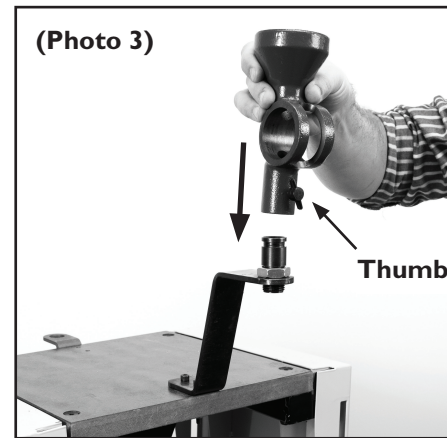


(Photo 1b)



(Photo 2)

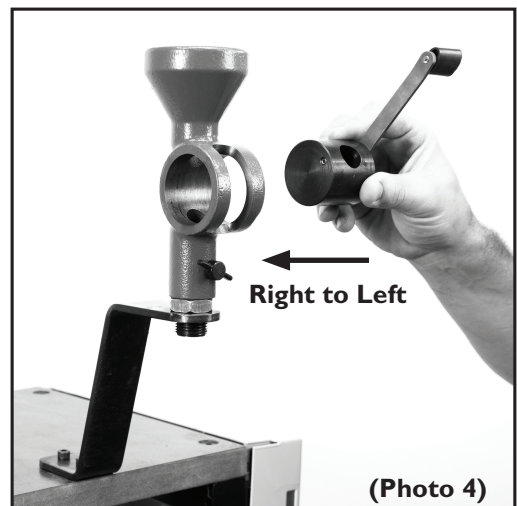
2. Set the Body on bracket assembly and secure with Thumbscrew **(Photo 3)**



(Photo 3)

Thumbscrew

3. For right handed operation, install Rotor into Body from right to left. For left handed operation, install Rotor into Body from left to right. **(Photo 4)**



Right to Left

(Photo 4)

- Set Meter to zero position. Holding the Meter Body, twist the Thimble so the 10 position on the Meter Body is even with the top edge of the Thimble. **(Photo 5a & 5b)**



If this position does not align with the 0 mark on the Thimble **(Photo 6)** – do the following:

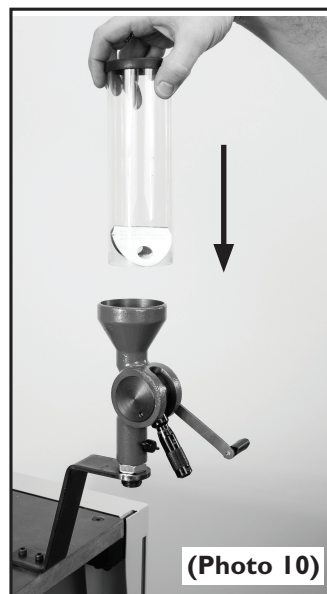
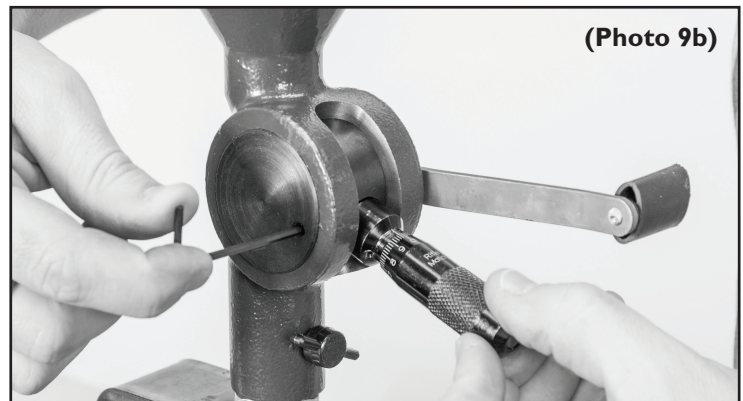
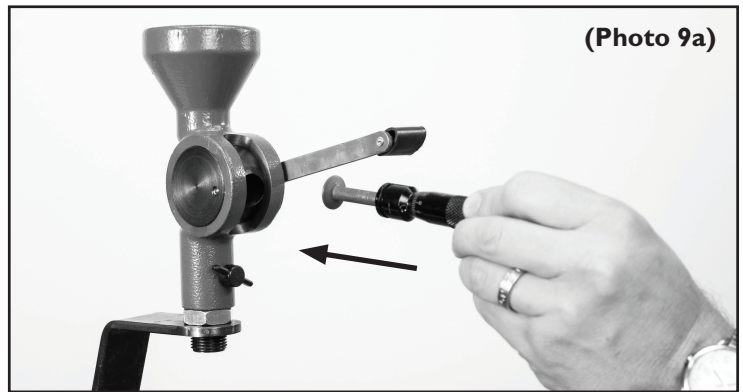
- Loosen the Meter Lock Screw at the bottom of the Thimble and twist it so it is aligned with the center line on the Meter Body. Retighten the Lock Screw at the bottom of the Thimble. **(Photo 7)**



- If the 10 position on the Meter Body is even with the top edge of the Thimble and the 0 mark on the Thimble is aligned with the center line of the Meter Body – twist the Thimble one complete turn clockwise. This is the zero position on the Meter. **(Photo 8)**

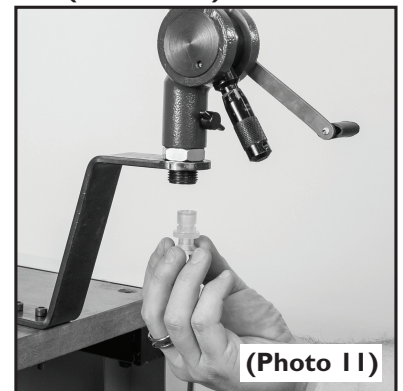


- With Handle oriented toward you, install the Meter Assembly into the Rotor with the center line of the Meter Body facing up. You will feel the Meter Assembly bottom out against the Body. Tighten the Rotor Lock Screw located on the side of the Rotor (opposite side from the Handle) to lock the Meter Assembly in place. **(Photo 9a & 9b)**



- Install Hopper Tube with Baffle and Cap onto Body. **(Photo 10)**

- Install 22 Caliber Nozzle **(Photo 11)**



OPERATION AND ADJUSTMENT

Do not proceed until the inside surfaces have been inspected and cleaned of any powder remaining from previous use. If this is the first use, all inside surfaces must be degreased, clean and completely dry. Before accurate measures of powder can be thrown, you must first run your intended powder through the system to develop a film of powder residue on all the internal surfaces. To do this, follow the steps detailed below:

1. Add enough powder to the Hopper Tube to completely cover the Baffle and extend up the Tube several Indicator Lines. This is the minimum amount of powder required to provide maximum consistency in powder charges. The Baffle is placed in the bottom of the Hopper Tube to support the weight of the powder column, so the Hopper Tube may be filled to its maximum capacity without decreasing the consistency in the powder charges.
2. Adjust the Meter to the highest number setting by twisting the Thimble counter-clockwise, as if you unthreading it from the assembly. Keep in mind the Meter Body should be secured within the Rotor with the Lock Screw and should not be turning as the Thimble is adjusted.
3. Hold or place a container under the Drop Tube/Nozzle and cycle the Rotor until all the powder has been run through the system. Do this slowly and consistently to get a feel for the operation of the Powder Measure. After this powder has been run through, a sufficient amount of powder residue will have distributed itself over the internal surfaces, preventing the powder from hanging up or sticking to the internal surfaces during your loading session.

Next, begin the trial and error process of adjusting the Meter to the desired charge weight. Indicator lines are provided on the Meter Body and Thimble, but due to the many sizes and shapes of powder granules, they do not directly correspond to an actual charge weight.

- a. With the Thimble adjusted to the highest setting (heaviest charge), rotate the Rotor Handle down allowing it to stop abruptly at the end of its travel
- b. Rotate the Rotor Handle back up allowing it to stop abruptly at the end of its travel to dispense the powder onto a powder scale pan. Allow enough time for all the powder to run through the Nozzle.
- c. Weigh the charge and dump it back into the Hopper Tube
- d. Compare the weight of the charge with your desired charge weight. Make note of the number indicated on the Meter Body.

For example: If your desired charge weight is $\frac{1}{2}$ of the dispensed charge weight, adjust the Meter to the number approximately $\frac{1}{2}$ of the number indicated on the Body.

- e. Adjust the Meter Thimble by twisting it clockwise to decrease the charge weight. Twist the Thimble counter-clockwise to increase the charge weight.
- f. Repeatedly adjust the Meter and weigh charges until the desired charge weight is obtained. Verify all your charge weights with an accurate powder scale like the Frankford Arsenal® Precision Scale before charging cases.

NOTE: Check the level of powder in the Hopper Tube during use. Add powder as needed to maintain the minimum level discussed in **Step I** of the **Operation instructions**. Also periodically check the Hopper Tube is fully seated within the Powder Measure Body. Failure to do so may result in the Hopper Tube working itself out of the Body and dumping its contents.

When the reloading session is complete, empty any remaining powder in the assembly into its original container or another suitable container that is clearly labeled.

TIPS AND PRECAUTIONS

1. Verify all charges with an accurate powder scale before charging cases.
2. Rotate lever at uniform speed while throwing a charge. Make sure to cycle the lever to a full stop at the top and bottom of the Body.
3. Periodically check the Hopper Tube is fully seated within the Body during operation

Platinum
SERIES

**Frankford
Arsenal** 
Reloading Tools

Powder Measure



Battenfeld[®]
Technologies, Inc.

2501 LeMone Industrial Blvd. / Columbia, MO 65201
573-445-9200 / Email: sales@battenfeldtechnologies.com